

The chemical composition of Amazonian plants^(*)

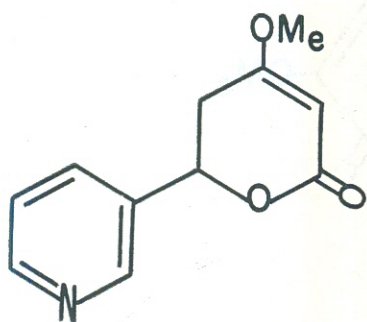
A Catalogue, edited by Setor de Fitoquímica, INPA, Manaus, Amazonas

FAMILY :
Lauraceae

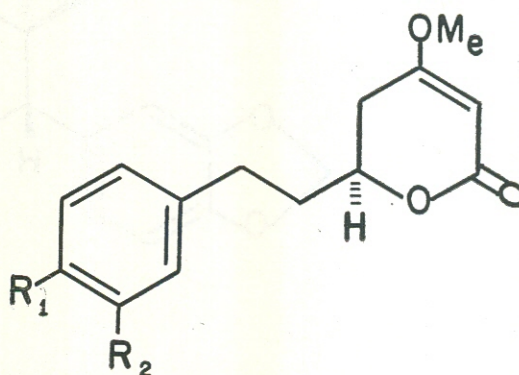
SPECIE :
Aniba gigantifolia O. C. Schmidt

OCCURRENCE : Manaus, Amazonas

TRUNK WOOD :
anibine (I)
(6S)-dihydrokawain (IIa)
(6S)-dihydromethysticin (IIb)
(6S)-tetrahydroiangonin (IIc)
(6S)-tetrahydro-11-methoxyiangonin (IId)



(I)



(IIa) R₁=R₂=H

(IIb) R₁=R₂=OCH₂O

(IIc) R₁=OMe; R₂=H

(IId) R₁=R₂=OMe

REFERENCES :

1. Von Bülow, M. V., Franca, N. C., Gottlieb, and Puentes Suarez, A. M. (1973) *Phytochemistry* 12, (no prelo)
2. Gottlieb, O. R. (1972) *Phytochemistry* 11, 1537
3. Saver, H. and Hänsel, R. (1967) *Planta Med.* 15, 443
4. Achenbach, H., Karl, W. and Smith, S. (1971) *Chem. Ber.* 104, 2688

(*) — Contributions to this catalogue, which will be continued in subsequent issues of this Journal, are invited, and should be submitted to address given above.

